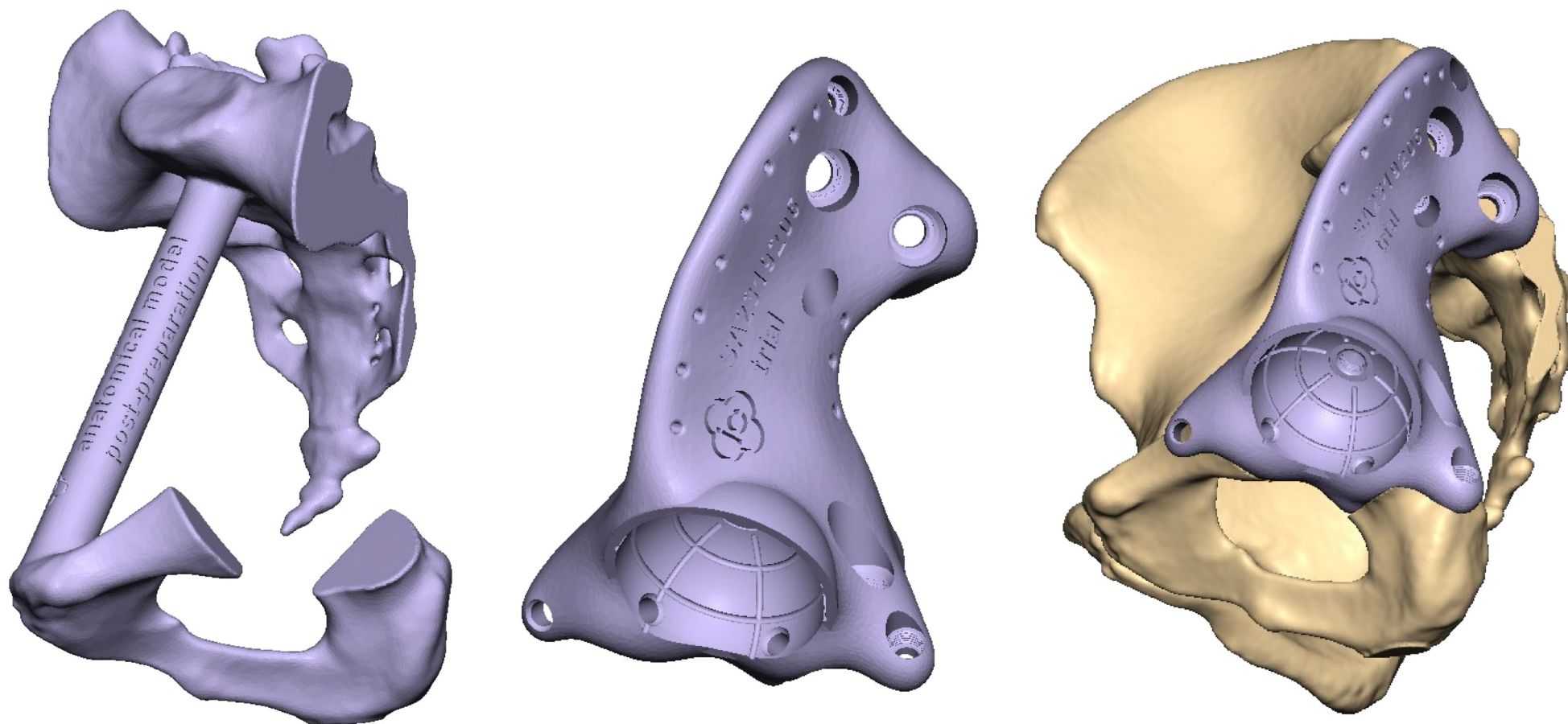


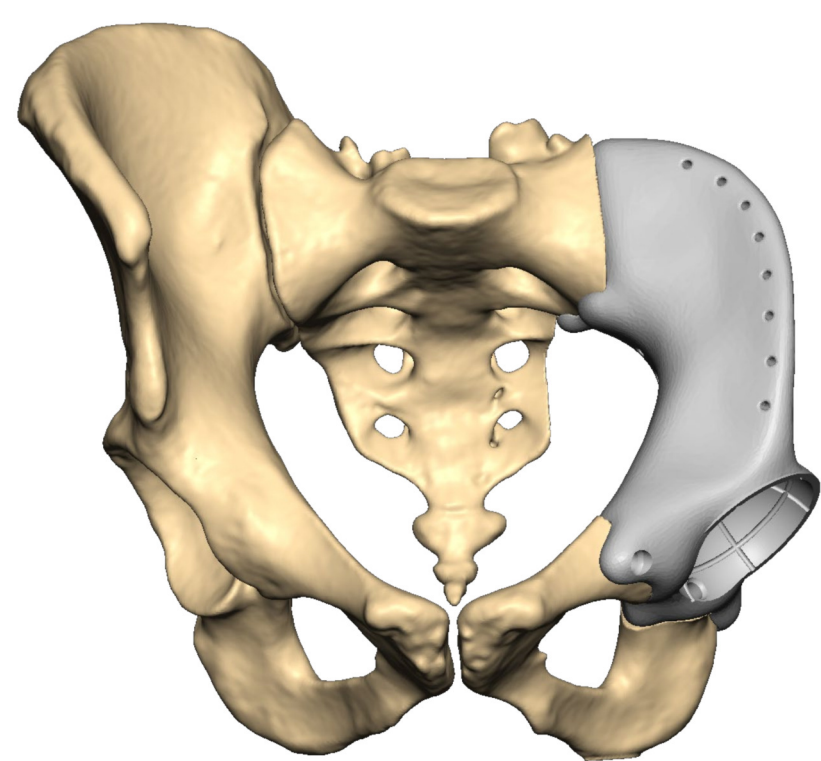
# Implant Trial & Pelvis Model



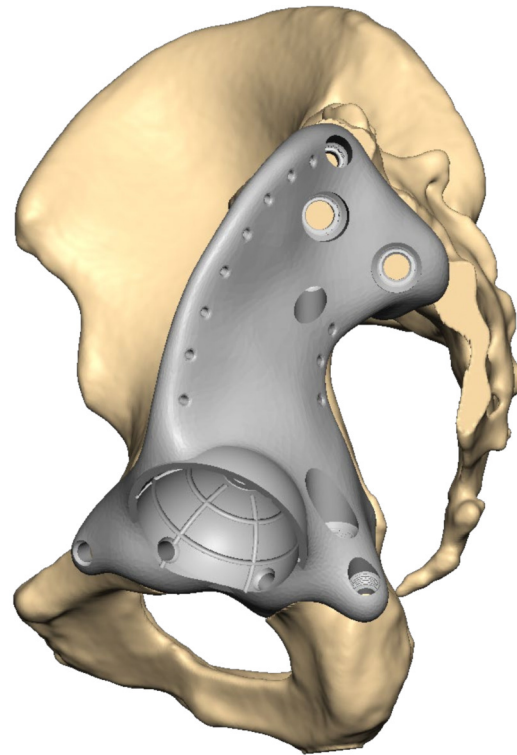
A pelvis model post-resection and a trial implant are provided and can be used to control the preparation



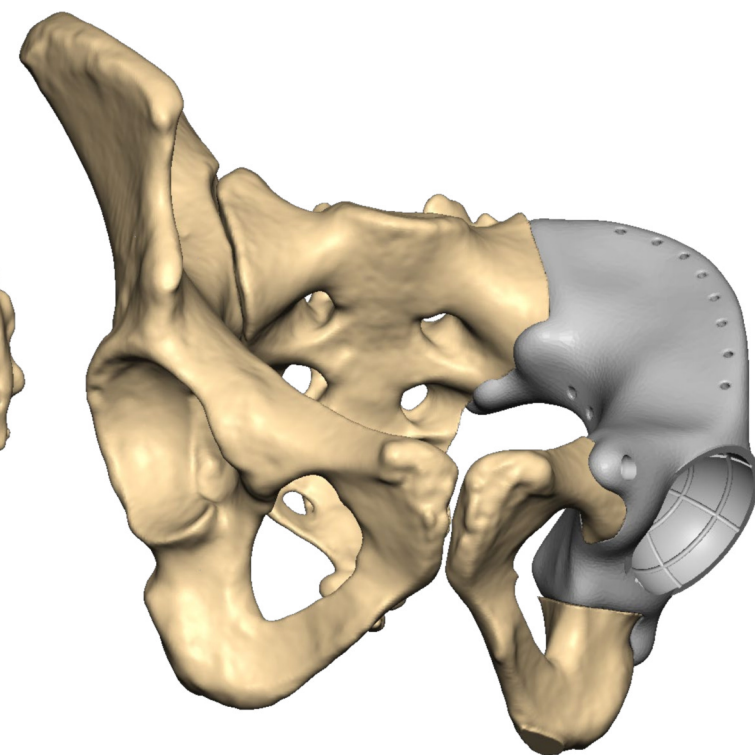
# Position of Implant



Anterior view

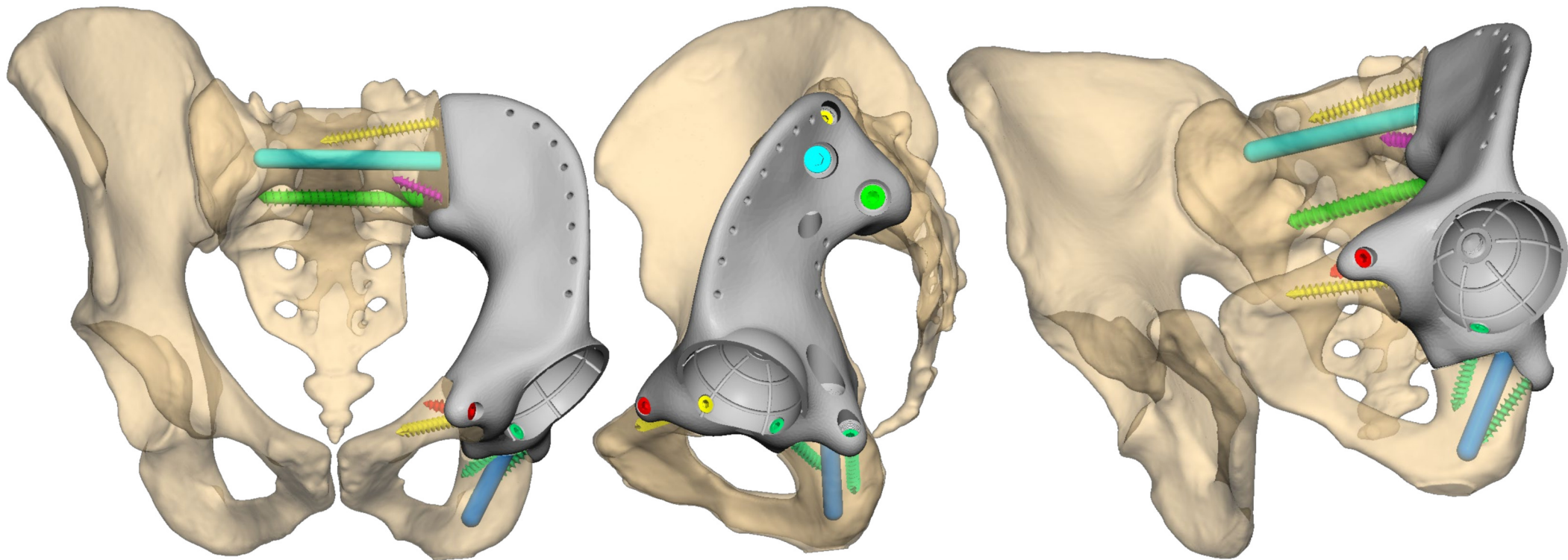


Lateral view



Isometric view

# Position of Implant (transparent)



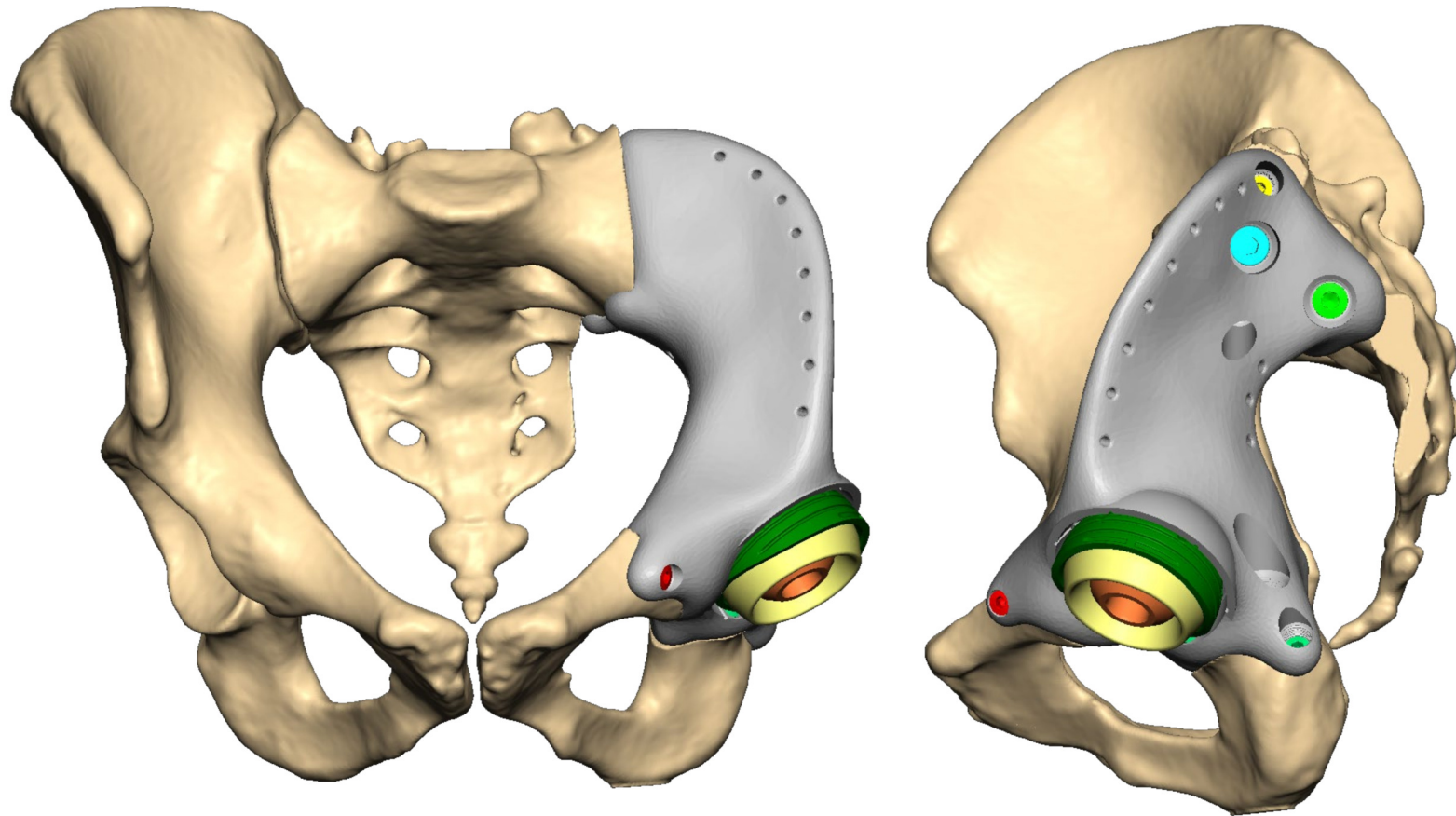
Anterior view

Lateral view

Isometric view



# EcoFit® 2M Cup + Head



## EcoFit® 2M tripolar system



SURGICAL TECHNIQUE

